

LOOSE FILL RUBBER (LFR) PLAYGROUND SURFACES INSTALLATION & MAINTENANCE INSTRUCTIONS

Installation Instructions

Accessibility standards require playgrounds to provide 60-inch-wide accessible routes within playgrounds to provide opportunities for children and adults with disabilities to be able access one of each type of ground level play components and access to entry and exit points of accessible elevated play components. The accessible routes and the clear ground space at required accessible play components, are required to meet minimum requirements for many different surface characteristics including firmness, stability, and slope. To ensure compliance with accessibility standards, correct installation, and a commitment to ongoing maintenance to ensure continued compliance is required. Ensuring the playground surface meets accessibility standards throughout the entire playground instead of only along accessible routes and clear spaces exceed the minimums and fosters inclusion for all.

1. To provide an installation for immediate access for all abilities, the TotTurf Loose Fill Rubber (LFR) must be raked level and either manually compacted or mechanically compacted as it is being installed- (Fig.1). Install in layers, roughly 2-3 inches at a time. Repeat the installation process until desired compacted thickness is achieved. Between layers, tamp or mechanically compact with a vibrating plate compactor. Compact in 2 directions for best results.



Fig.1

Maintenance Instructions

Top-Offs

1. To maintain the TotTurf LFR at the recommended (6 in.) depth, you will need to top-off the area as necessary to maintain proper depth and warranty. When the TotTurf LFR depth falls below the original depth (marked on the playground uprights at the time of installation), contact your Robertson Recreational Surfaces representative to order new material.
2. Entry from LFR to hard surface. The transition from a hard surface connecting route into the LFR playground surface must not have a change in level greater than a ½ inch. Top off the LFR to create a smooth and level transition into the playground or on to the unitary surface- (Fig 2).



Heavy Use Areas

1. During routine inspections, heavily used areas such as under swings and at slide exits should be raked to maintain proper depth and compliance. (Fig.3)
2. If heavy use areas are not raked for long periods of time, the depth of LFR may be reduced, lessening its impact attenuation properties. Just raking may not ensure the area for compliance so top-off materials may be necessary to retain the proper critical fall depths.



Foreign Objects

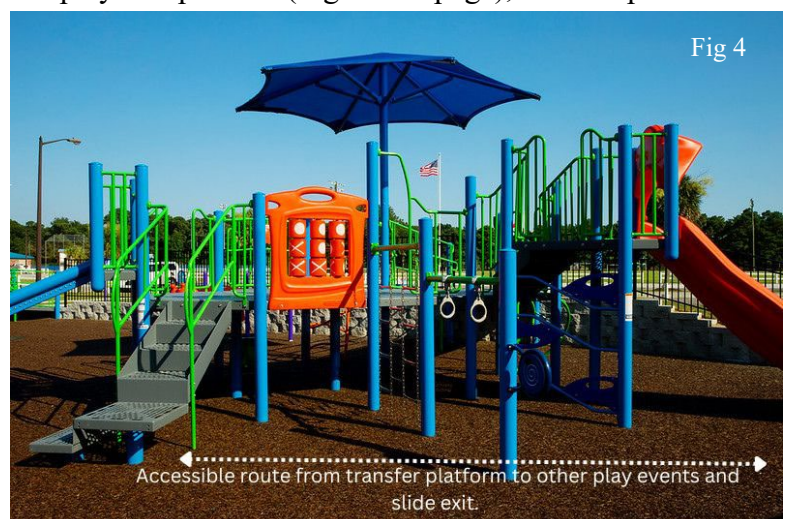
1. Rake the play area level.
2. During routine inspection, remove any foreign objects such as glass, rocks, and litter.

Winter Weather

If sufficient moisture is retained in LFR, it will freeze at temperatures below 32°F (0°C). The LFR surface should be checked when the temperature falls below freezing.

Accessibility

1. To maintain a firm, stable accessible surface; rake, level and compact as necessary. To start, focus on the access routes leading into and out of the play area around an entrance ramp, for example (Fig.6 next page), accessible routes leading to ground level components, accessible routes from entry/exit points of designated accessible play equipment (Figure 4), and clear floor spaces where a person may park their mobile device such as at ground level play components (Fig.5 next page), transfer platforms and entry/exit points of play equipment- (Fig.7 next page). These areas must be firm, compacted and level to within 2% in all directions and minimum of 30"x48" in size. For swing areas, a clear floor space that is level (<2%) must be beside the swing for parking or transferring from a mobile device to the swing and vice-versa. See figure (8).



Accessibility (continued)



Fig. 5- Example of clear floor space in front of ground level component.



Fig. 6- Example of entrance ramp for above ground installations.



Fig. 7 - Example of child using transfer platform to transition from mobile device to platform.

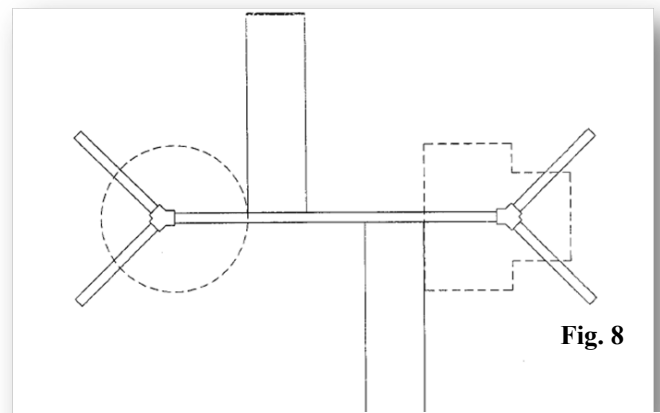


Fig. 8 - At an accessible swing a turning space must be provided. The turning surface must be maintained- shown in dotted line. Either a 60-inch turning circle or T-shaped space is acceptable.

Note: Periodical adjustments of TotTurf recycled loose-fill rubber are required under slides, swings and other concentrated use zones. Installing TotTurf mats in these areas will help control displacement in these high use zones. **WARNING: Failure to maintain TotTurf recycled loose-fill rubber at the initial installation depth may result in an injury and void your warranty.**